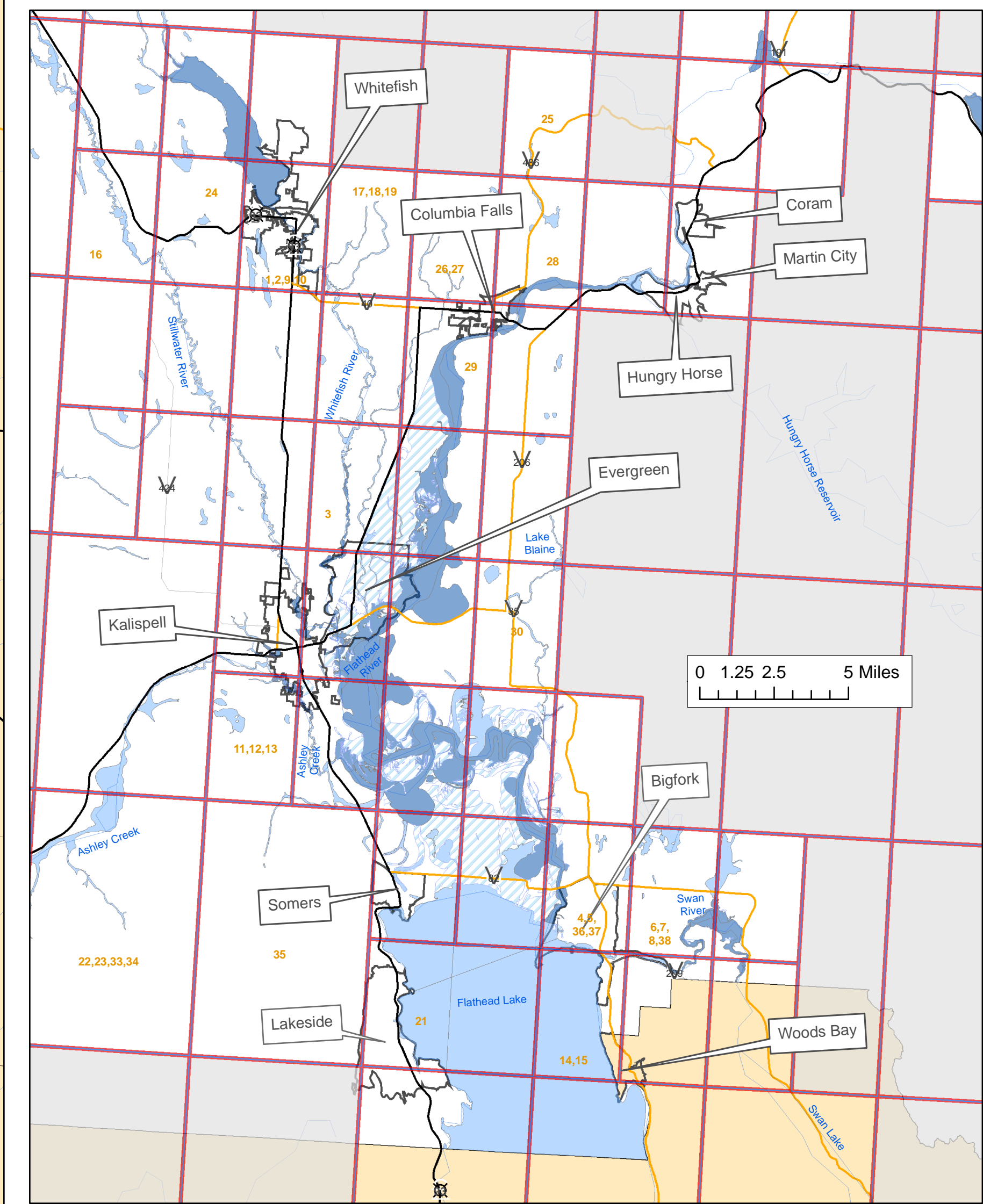


Excerpt from DNRC's 2002 Mapping Inventory for Flathead County.  
Priorities for revised mapping:

Priority	Panel #	Flooding Source	Miles
1	1090C	Cow Creek	1.1
2	1090C	Blanchard Lake	3.4
3	1420C	Spring Creek	3.4
4	2305D	Swan River	0.4
5	2305D	Flathead Lake	2.1
6	2310D	Peterson Lake	1.3
7	2310D	Echo Lake	2.5
8	2310D	Abbot Lake	1.2
9	1090C	Sampson Lake	0.3
10	1090C	Whitefish River	2.6
11	1815D	Lower Foy Lake	0.2
12	1815D	Middle Foy Lake	0.4
13	1815D	Foy Lake	1.6
14	2315D	Flathead Lake	2.6
15	2315D	Swan River	0.7
16	1065C	Stillwater River	5.1
17	1095C	Whitefish River	1.3
18	1095C	Walker Creek	4.4
19	1095C	Haskill Creek	3.1
20	1440C	Spring Creek	2.0
21	2290C	Flathead Lake	5.0
22	2250C	Mount Creek	3.3
23	2250C	Truman Creek	4.2
24	1070C	Beaver Lake	1.4
25	1110C	Cedar Creek	1.2
26	1115C	Trumbull Creek	3.7
27	1115C	Garnier Creek	2.1
28	1120C	Cedar Creek	2.5
29	1430C	Trumbull Creek	3.7
30	1835D	Lake Blaine	7.4
31	1975C	Bear Creek	3.2
32	2000C	Bear Creek	1.7
33	2250C	Smith Lake	1.3
34	2250C	Ashley Creek	2.7
35	2275C	Patrick Creek	3.0
36	2305D	Peterson Lake	1.2
37	2305D	Johnson Lake	1.1
38	2310D	Mud Creek	1.9

# Flathead County Preliminary Panel Scheme

71 of 189 Panels Printed (no 1" = 500')



Neighboring Counties (from NRIS)

Flathead County

**FEMA Q3 Data**

**ZONE**

- A
- AE
- ANI
- X
- X500
- Community Boundaries (ESRI data)
- Simplified Streams (Census 2002, from NRIS)

**Preliminary Panel Scheme**

- NO
- YES

